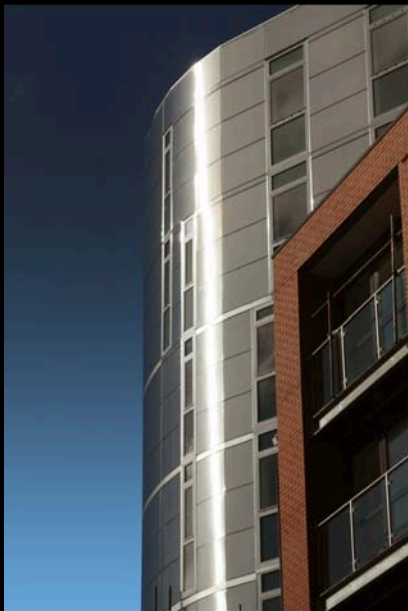


DAISYSPRING WORKS



AXIS
architecture



DAISYSPRING WORKS

A landmark building on a key regeneration site within the historic Kelham Island Conservation Area combines a traditional, context-sensitive design with an ultra-modern 8-storey stainless-steel-clad tower adjacent to a busy node of Sheffield's new inner relief road.

Housing 132 one and two bedroom luxury apartments and 5 large commercial units with 100 underground car parking spaces. The design incorporates a 6-storey, colour-changing lightwall. This feature will create a distinctive beacon for the area.

Value: £15 million
Client: Rok Harrison Construction
Status: Completion October 2008
Location: Sheffield
Sectors: Residential / Commercial
Size: 132 apartments, 7500 sqft commercial
Key Staff: Christofer Cooney



A X I S
architecture