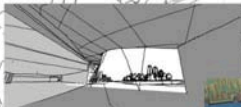


view from inside the hub



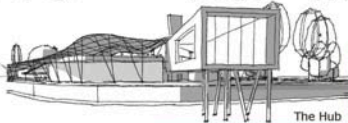
general view

The Oxford Lakes are being created on a 37ha site and will form two large inter-linked water areas of 13 hectares in total.

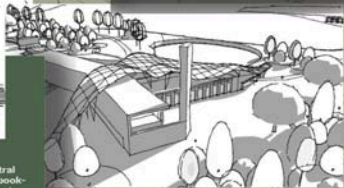
The naturalistic shape of the lakes creates extensive areas of banking that provide private secluded spaces for fishing and cabins, whilst still allowing extensive sightlines along the full length of the water.

The Lakes and the neighbouring golf course are both served from a hub building which is close enough to the Heathfield Village to take advantage of its facilities, whilst retaining a unique separate identity. This is reinforced by a modernist organic design to the hub, that will reach out over the Lake and create a unique focal point.

The Hub



The Hub itself would contain a central service area to control residential bookings, equipment hire (golf equipment, bikes etc) and be the base for servicing and maintaining all the grounds and buildings. It would also have retail areas for selling equipment as well as a bar, coffee shop, restaurant area.



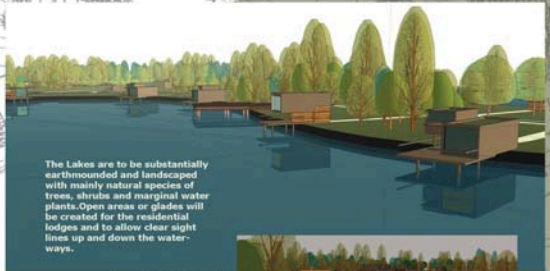
The Hub and the main bridge access to the site





The Oxford Lakes project is part of a wider leisure development which covers a site of approximately 37 hectares providing fishing, sailing, and golf leisure pursuits in the heart of Oxfordshire. The lakes are to be artificially formed with natural banking forms generating secluded spaces for the prefabricated fishing cabins and jetties to sit out in the water. A Hub building with an organically shaped timber grid shell roof anchors all of the facilities together at the centre of the site.

Value : £40m
Client : Oxford Lakes Ltd
Status : Feasibility
Location : Oxford
Sectors : Leisure
Size : 130,000m² / 13 ha.
Key Staff : Kevin Seers



The Lakes are to be substantially earthmounded and landscaped with mainly natural species of trees, shrubs and marginal water plants. Open areas or glades will be created for the residential lodges and to allow clear sight lines up and down the waterways.

The Lake area is designed to be a totally car free environment, with a network of trails which would be used for cycling and jogging as well as access to the day fishing areas and the residential lodges. It is suggested that vehicles are limited to electric powered units such as six wheeler cats, that can be used for servicing the buildings and assist in delivering people's luggage and equipment throughout the Lakes.

The Lakes are to be dug to create a variety of environments for the stocked fish and the wildlife that will eventually take over and inhabit. This means creating richly planted marginal and wet areas, as well as banks and jetties that fisherman can use to safely catch, keep and release fish.



The Hub and the main bridge access to the site

