



VELOCITY TOWER

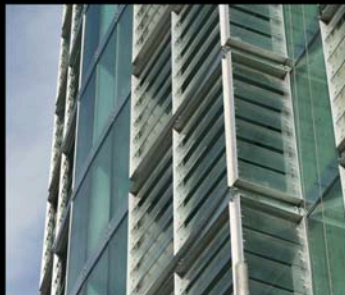


AXIS
architecture



Value : £40m
Client : Velocity developments
Status : Feasibility / Planning approved / On site
/ Complete
Location : Sheffield
Sectors : Commercial / Residential / Mixed Use
Size : 6,000m²
Key Staff : Kevin Seers

VELOCITY TOWER



VELOCITY TOWER

AXIS's proposal for this 30 storey residential tower with an 18 storey apart hotel next to it has changed the Sheffield skyline and introduced new construction techniques to accelerate the build time. Scheme comprises 120 studios apartments and serviced offices with conference suite on the impressive double height top floor. Prefabrication was used throughout the construction and the crisp glass facades were erected at a rapid speed. Coordinating the advanced heating and cooling equipment without disrupting the modern glass façade is just one of the successful feats of this landmark building.