



VELOCITY VILLAGE



AXIS
architecture



AXIS working with Velocity developments have created the wholesale transformation of Sheffield's St. Vincent's quarter from derelict workshops and open parking lots to become a popular and desirable mixed use urban village only a short walk from Sheffield's city centre. The scheme comprises 440 apartments, a multi storey basement car park carefully integrated into the site topography and 150,000 sq ft commercial space, all within a modern design using the latest forms of off site prefabrication to accelerate the construction process.

Value : £60m

Status : On site / Complete

Location : Sheffield

Sectors : Commercial / Residential / Mixed Use

Size : 65,000m²

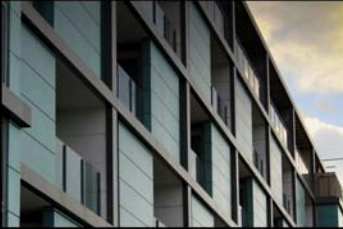
Key Staff : Kevin Seers



VELOCITY VILLAGE



VELOCITY VILLAGE



VELOCITY VILLAGE